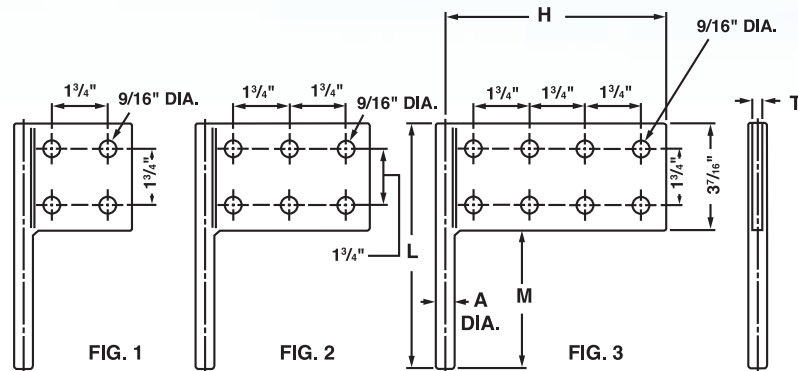


Copper Transformer Adaptor Terminals

Type FT

- Manufactured from high strength cast copper alloy
- Tin plated for corrosion resistance
- Drilling in pad conforms to NEMA standards for 1/2" hardware
- Provides for multiple take-offs from the transformer secondary connector



CATALOG NUMBER	FIG. NO.	APPROXIMATE DIMENSIONS (IN.)				
		A (DIA.)	M	H	L	T
FT-4-037	1	.38	1.75	3.63	5.19	.25
FT-4-056		.56	2.00	3.09	5.44	.38
FT-4-075		.75	2.50	3.81	5.94	.38
FT-4-087		.88	3.75	3.88	7.19	.38
FT-4-118		1.19	4.25	4.06	7.69	.38
FT-6-037	2	.38	1.75	5.38	5.16	.25
FT-6-056		.56	2.00	5.47	5.44	.38
FT-6-075		.75	2.50	5.56	5.94	.38
FT-6-087		.88	3.75	5.63	7.19	.38
FT-6-118		1.19	4.25	5.81	7.69	.38
FT-8-037	3	.38	1.75	7.13	5.19	.25
FT-8-056		.56	2.00	7.22	5.44	.38
FT-8-075		.75	2.50	7.31	5.94	.38
FT-8-087		.88	3.75	7.38	7.19	.38
FT-8-118		1.19	4.25	7.56	7.69	.38